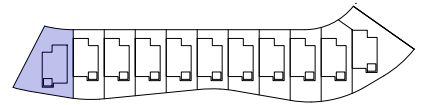


**SEVEN LAKES**  
SANTA ROSALÍA RESORT



P-53.2.4. **1**

SUP. PARCELA PLOT AREA	329,76 m <sup>2</sup>
SUP. CONSTRUIDA BUILT AREA	119,32 m <sup>2</sup>
SUP. CONSTR. SÓTANO BASEMENT BUILT AREA	117,84 m <sup>2</sup>
SUPERFICIE ÚTIL INTERIOR INDOOR USEFUL AREA	84,79 m <sup>2</sup>
SUPERFICIE ÚTIL EXTERIOR OUTDOOR USEFUL AREA	508,95 m <sup>2</sup>

